

FCXI P

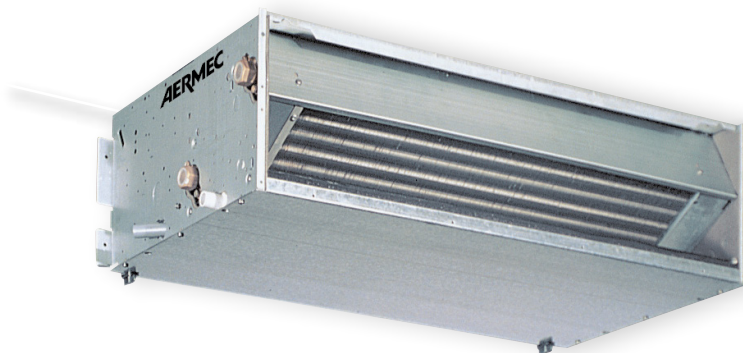
Fan coils with Brushless Inverter motor (EC)
In-duct installation



Aermec is participating in the EUROVENT Program FCPH
The related products can be found at the website www.eurovent-certification.com



VMF



- **ELECTRIC SAVING EQUAL TO 50% COMPARED TO A FAN COIL WITH 3-SPEED MOTOR**
- **FULLY SILENT FUNCTIONING**
- **FULL COMFORT: REDUCED TEMPERATURE AND RELATIVE HUMIDITY OSCILLATIONS**

Features

Recessed fan coils with inverter technology, for heating, cooling and dehumidifying, specific to work in sensible environment.

Equipped with inverter Brushless motor for an high efficiency and a continuous air flow rate modulation in order to increased comfort and guarantee electric saving. The inverter motor allows a better air temperature regulation on based on the real indoor environment requirements without temperature swinging.

The FCXI P are the ideal solution for 2/4-pipe systems and for tertiary and commercial installations.

Versions:

FCXI P: wall/ceiling mounted without cabinet

FCXI PBV: wall/ceiling mounted without cabinet with double circuit coil for 4-pipe system with standard connections (left)

FCXI PBVD: wall/ceiling mounted without cabinet with double circuit coil for 4-pipe system with right connections

The hydraulic connections of the BV and BVD versions, up to size 56, are not reversible during installation. Specify the connection side when placing the order.

• Brushless motor with 0-100% speed continuous variation to guarantee best performance at very low sound level

• Centrifugal fan designed to guarantee continuous modulation of the air flow rate and to increase comfort and electric saving.

• Unit with standard coil (20÷80)

• Unit with larger coil (24÷84)

• Low pressure drop

• Air filter with easy extraction and cleaning

• Removable augers for easy and effective cleaning

• Reversibility of the hydraulic connections in the installation phase

A specific wall-control range is available for the FCXI P. Choose between these panels for simple and complete regulation. Refer to the specific sheet for further details.

VERSION	AVAILABLE SIZES														
	Standard coil						Increased coil								
FCXI_P	20	30	36	42	50	56	62	82	102	24	34	44	54	64	84
FCXI_PBV	20	30	36	42	50	56	62	82	102	-	-	-	-	-	-
FCXI_PBVD	20	30	36	42	50	56	62	82	102	-	-	-	-	-	-

Accessories

- **WMT21:** Electronic thermostat with LCD display (wall installation).
- **SWAI:** Water temperature probe for WMT21 electronic thermostat.
- **AMP:** Kit for wall/ceiling mounted installation.
- **BC:** Auxiliary condensate drip tray.
- **BV:** Hot water coil with one row. It is not available for versions with 4 rows or with Plasmacluster.
- **Specify the connection side in case of in-site assembly.**
- **PMZ:** Plenum with motorised dampers (refer to the specific sheet for further details).
- **CHF:** The VentilCassaforma is a galvanised sheet steel template, for P versions, which allows you to obtain a space for housing the fan coil, directly in the wall.
- **DSC4:** Device for draining condensate.
- **GA:** Intake grid with fixed louvers.
- **GAF:** Intake grid with fixed louvers with filter.
- **GM:** Flow grid with adjustable louvers.
- **MA:** Protective cabinet, type A (use BC 4 tray accessory).
- **MU:** Protective cabinet, type U (use BC 5-6 tray accessory if horizontal or use BC 4 if vertical).
- **PA:** Galvanised sheet steel intake plenum equipped with intake fittings for circular section ducts.
- **PA-F:** Intake plenum, which allows recovery and flow on the same side. It is suitable for all those installations outside air-conditioned rooms, in order to minimise noise and facilitate maintenance operations.
- **PM:** Galvanised sheet steel flow plenum, externally insulated, equipped with plastic flow fittings for ducts and circular sections.
- **RD:** Straight flow fitting for ducting.
- **RDA:** Straight intake fitting for ducting.
- **RP:** 90° flow fitting for ducting.
- **RPA:** 90° intake fitting for ducting.
- **SE:** External air damper with manual control.
- **VCF:** Kit made up of 3-way motorised valves with insulating shell, insulated copper fittings and pipes. For 4, 3, and 1-row coils (BV) Versions with 230V and 24V~50Hz power supply.
- **VCFD:** Kit composed of 2-way motorised valve and copper pipes and connections. For 4, 3, and 1-row coils (BV) Versions with 230V and 24V~50Hz power supply.
- **Control panels and VMF System:** Find the features in the specific sheets.

		FCXI												
Accessoires		20	24	30	34	36	40	44	50	54	56	80	84	Versions
WMT21	(1)	P
SWAI		P
AMP		P
AMP20		P
BC	4	(2)	P + MA
	5		P + MU
	6		P + MU
	8		P
	9		P
BV	122		P
	132		P
	142		P
	162		P
CHF	22		P
	32		P
	42		P
DSC4	62		P
	22	(3)(4)	P
	32		P
GA	42		P
	62		P
	22		P
GAF	32		P
	42		P
	62		P
GM	22		P
	32		P
	42		P
MA	62		P
	22		P
	32		P
MU	42		P
	62		P
	22		P
PA	32		P
	42		P
	62		P

(1) The features of the control panels and the VMF system are described in the dedicated data sheet

(2) The accessoires BC4 and VCF / VCFD cannot be installed simultaneously on the same fan coil

(3) DSC4 is not available with AMP and auxiliary condensate drip tray

(4) DSC4 and VMF-system cannot be installed simultaneously on the same fan coil

		FCXI												
Accessoires		20	24	30	34	36	40	44	50	54	56	80	84	Versions
PA	22 F	.	.											P
	32 F			.	.	.								P
	42 F								P
	62 F											.	.	P
PM	22	.	.											P
	32			.	.	.								P
	42								P
RD	22	.	.											P
	32			.	.	.								P
	42								P
RDA	22	.	.											P
	32			.	.	.								P
	42								P
RP	22	.	.											P
	32			.	.	.								P
	42								P
RPA	22	.	.											P
	32			.	.	.								P
	42								P
SE	62											.	.	P
	20X (5)	.	.											P
	30X (5)			.	.	.								P
	40X (5)								P
VCF	80X (5)											.	.	P
	1X4L - 1X4R	.	.	.										P
	2X4L - 2X4R				P
	3X4L - 3X4R											.	.	P
	41 - 4124 (6)	.	.	.										P
	42 - 4224 (6)				P
	43 - 4324 (6)											.	.	P
44 - 4424 (6)(7)	.	.	.										P	
45 - 4524 (6)(7)											.		P	
VCFD	1 - 124 (6)	.	.	.										P
	2 - 224 (6)				P
	3 - 324 (6)											.	.	P
	4 - 424 (6)(7)		P
ZX	7			P
	8											.	.	P

(5) The SE accessory require matching with ZX for vertical installation

(6) VCF4124-4224-4324-4424-4524 / VCFD124-224-324-424 it's 24V

(7) Only for accessoires BV

Technical data (EUROVENT FCH)

FCXI - P		20			24			30			34			36			40			44		
Fan speed		H	M	L	H	M	L	H	M	L	H	M	L	H	M	L	H	M	L	H	M	L
Heating Performance																						
2 pipe configuration																						
Heating capacity (70°C)	(1) kW	2,96	2,53	1,91	3,91	3,10	2,10	5,35	4,07	3,17	5,96	4,80	3,73	6,41	4,98	4,19	6,62	5,52	4,06	8,60	6,93	5,20
Water flow rate	(1) l/h	260	222	167	343	272	184	470	357	278	523	421	327	563	437	367	581	484	356	754	608	456
Pressure drops	(1) kPa	6	4	3	4	3	1	20	12	8	11	7	5	23	15	11	15	11	6	22	15	9
Heating capacity (50°C)	(2) kW	1,77	1,51	1,13	2,32	1,84	1,25	3,16	2,40	2,06	3,55	2,86	2,22	3,80	2,95	2,48	3,96	3,30	2,43	4,95	4,14	3,17
Water flow rate	(2) l/h	258	210	144	298	236	174	413	316	267	482	392	303	482	370	311	585	478	397	765	617	463
Pressure drops	(2) kPa	6	5	2	3	2	1	16	10	7	9	7	4	9	7	6	15	13	8	23	15	9
Heating capacity (45°C)	(3) kW	1,47	1,26	0,95	1,95	1,54	1,04	2,66	2,02	1,57	2,97	2,39	1,85	3,19	2,48	2,08	3,29	2,75	2,02	4,28	3,45	2,59
Water flow rate	(3) l/h	256	218	165	338	268	181	462	351	273	515	414	322	554	430	362	571	477	351	742	598	449
Pressure drops	(3) kPa	5	4	2	4	3	1	19	12	8	10	7	4	23	14	11	14	10	6	21	14	9
Cooling Performance																						
Total cooling capacity	(4) kW	1,50	1,22	0,84	1,73	1,37	1,01	2,40	1,84	1,55	2,80	2,28	1,76	2,80	2,15	1,81	3,40	2,78	2,31	4,45	3,59	2,69
Sensible cooling capacity	(4) kW	1,24	1,00	0,67	1,38	1,09	0,76	1,90	1,57	1,11	2,13	1,72	1,25	2,20	1,82	1,28	2,76	2,11	1,63	3,30	2,64	1,96
Water flow rate	(4) l/h	258	210	144	298	236	174	413	316	267	482	392	303	482	370	311	585	478	397	765	617	463
Pressure drops	(4) kPa	6	5	3	3	2	1	28	17	13	14	10	6	28	17	13	14	10	7	40	27	16
Fans																						
Fan	type/n°	centrifugal/1						centrifugal/2						centrifugal/3								
Air flow rate	m³/h	290	220	140	290	220	140	450	350	260	450	350	260	450	350	260	600	460	330	600	460	330
Sound data																						
Sound power level	(5) dB(A)	50	43	31	50	43	31	48	41	34	48	41	34	48	41	34	51	44	39	51	44	39
Sound pressure level	dB(A)	42	35	23	42	35	23	40	33	26	40	33	26	40	33	26	43	36	31	43	36	31
Diameter connections																						
Standard coil	Ø	1/2"			/			1/2"			/			3/4"			3/4"			/		
Increased coil	Ø	/			3/4"			/			3/4"			/			/			3/4"		
Electrical Features																						
Absorbed power	W	12	8	5	12	8	5	13	7	4	13	7	4	13	7	4	17	9	6	17	9	6
Max. input current	A	0,12			0,12			0,21			0,21			0,21			0,28			0,28		
Electrical wiring		90	84	44	90	84	44	90	84	48	90	84	48	90	84	48	90	82	52	90	82	52
Power supply	V/ph/Hz	230V~50Hz																				
Energy Efficiency classification (EUROVENT)																						
FCEER		E			E			D			D			D			D			D		
FCCOP	(6)	E			E			D			D			D			D			D		

FCXI - P		50			54			56			80			84		
Fan speed		H	M	L	H	M	L	H	M	L	H	M	L	H	M	L
Heating Performance																
2 pipe configuration																
Heating capacity (70°C)	(1) kW	8,19	7,53	5,02	10,10	8,76	6,24	9,65	8,43	6,06	15,14	13,35	10,77	17,10	14,42	11,20
Water flow rate	(1) l/h	719	660	440	886	768	547	846	740	531	1328	1171	945	1500	1265	982
Pressure drops	(1) kPa	15	13	6	23	18	10	42	34	18	21	16	11	31	23	15
Heating capacity (50°C)	(2) kW	4,87	4,48	3,00	6,10	5,22	3,70	5,38	4,84	3,68	7,96	6,86	5,20	10,20	8,60	6,70
Water flow rate	(2) l/h	721	604	432	855	743	533	791	662	475	1189	860	738	1479	1259	992
Pressure drops	(2) kPa	15	11	6	22	17	9	22	20	15	21	12	9	31	23	15
Heating capacity (45°C)	(3) kW	4,08	3,75	2,50	5,02	4,36	3,10	4,80	4,20	3,01	7,53	6,64	5,36	8,51	7,17	5,57
Water flow rate	(3) l/h	707	650	433	872	756	539	833	728	523	1307	1152	930	1476	1245	967
Pressure drops	(3) kPa	14	12	6	22	17	9	40	33	17	20	16	11	30	22	14
Cooling Performance																
Total cooling capacity	(4) kW	4,19	3,51	3,51	4,97	4,32	3,10	4,60	3,85	2,76	6,91	5,00	4,29	8,60	7,32	5,77
Sensible cooling capacity	(4) kW	3,00	2,54	1,79	3,54	3,06	2,17	3,50	3,07	2,12	5,68	3,78	2,97	5,78	4,87	2,80
Water flow rate	(4) l/h	721	604	432	855	743	533	791	662	475	1189	860	738	1479	1259	992
Pressure drops	(4) kPa	19	14	8	26	21	12	38	28	15	22	12	9	30	22	15
Fans																
Fan	type/n°	centrifugal/2						centrifugal/3								
Air flow rate	m³/h	720	600	400	720	600	400	720	600	400	1140	930	700	1140	930	700
Sound data																
Sound power level	(5) dB(A)	56	51	42	56	51	42	56	51	42	62	57	51	62	57	51
Sound pressure level	dB(A)	48	43	34	48	43	34	48	43	34	54	49	43	54	49	43
Diameter connections																
Standard coil	Ø	3/4"			/			3/4"			3/4"			/		
Increased coil	Ø	/			3/4"			/			/			3/4"		
Electrical Features																
Absorbed power	W	37	20	8	37	20	8	37	20	8	80	40	30	80	40	30
Max. input current	A	0,35			0,35			0,35			0,49			0,49		
Electrical wiring	%	90	86	60	90	86	60	90	86	60	90	84	45	90	84	45
Power supply	V/ph/Hz	230V~50Hz														
Energy Efficiency classification (EUROVENT)																
FCEER		D			D			D			D			D		
FCCOP	(6)	D			D			D			D			D		

H max. speed; M med. speed; L min. speed

- (1) Room air 20°C b.s.; Water (in/out) 70°C/60°C;
- (2) Room air 20°C b.s.; Water (in) 50°C; Water flow rate as in cooling mode (EUROVENT)
- (3) Room air 20°C b.s.; Water (in/out) 45°C/40°C (EUROVENT)
- (4) Room air 27°C b.s./19°C b.u.; Water (in/out) 7°C/12°C (EUROVENT)
- (5) Sound power level on the basis of measurements made in compliance with Eurovent 8/2
- (6) FCCOP Related to: Room air 20°C b.s.; Water (in) 50°C; Water flow rate as in cooling mode

Sound pressure level (A-weighted) measured in the room with volume V=85m³, reverberation time t = 0.5 s; Direction factor Q = 2; Distance r = 2.5m

Technical data (EUROVENT FCH)

FCXI - P		20			30			36			40		
Fan speed		H	M	L	H	M	L	H	M	L	H	M	L
Heating Performance													
4 pipe configuration with additional heat exchanger													
Heating capacity (70°C)	(1) kW	1,77	1,51	1,13	2,85	2,45	2,03	2,85	2,45	2,03	3,46	3,41	2,66
Water flow rate	(1) l/h	155	132	99	250	215	178	250	215	178	303	299	233
Pressure drops	(1) kPa	6	5	3	16	12	8	16	12	8	21	20	14
Cooling Performance													
Total cooling capacity	(2) kW	1,50	1,22	0,84	2,40	1,84	1,55	2,80	2,15	1,81	3,40	2,78	2,31
Sensible cooling capacity	(2) kW	1,24	1,00	0,67	1,90	1,57	1,11	2,20	1,82	1,28	2,76	2,11	1,63
Water flow rate	(2) l/h	258	210	144	413	316	267	482	370	311	585	478	397
Pressure drops	(2) kPa	6	5	3	28	17	13	28	17	13	14	10	7
Water content	l												
Fans													
Fan	type/n°	centrifugal/1						centrifugal/2					
Air flow rate	m³/h	290	220	140	450	350	260	450	350	260	600	460	330
Sound data													
Sound power level	(3) dB(A)	50	43	31	48	41	34	48	41	34	51	44	39
Sound pressure level	dB(A)	42	35	23	40	33	26	40	33	26	43	36	31
Diameter connections													
Standard coil	Ø	1/2"			1/2"			3/4"			3/4"		
Additional coil	Ø	1/2"			1/2"			1/2"			1/2"		
Electrical Features													
Absorbed power	W	12	8	5	13	7	4	13	7	4	17	9	6
Max. input current	A	0,12			0,21			0,21			0,28		
Electrical wiring		90	84	44	90	84	48	90	84	48	90	82	52
Power supply	V/ph/Hz	230V~50Hz											
Energy Efficiency classification (EUROVENT)													
FCEER		E			D			D			D		
FCCOP	(4)	E			D			D			D		

FCXI - P		50			56			80			
Fan speed		H	M	L	H	M	L	H	M	L	
Heating Performance											
4 pipe configuration with additional heat exchanger											
Heating capacity (70°C)	(1) kW	4,38	3,94	3,22	4,38	3,94	3,22	6,41	6,30	5,30	
Water flow rate	(1) l/h	384	346	282	384	346	282	562	553	465	
Pressure drops	(1) kPa	35	30	21	35	30	21	15	14	11	
Cooling Performance											
Total cooling capacity	(2) kW	4,19	3,51	3,51	4,60	3,85	2,76	6,91	5,00	4,29	
Sensible cooling capacity	(2) kW	3,00	2,54	1,79	3,50	3,07	2,12	5,68	3,78	2,97	
Water flow rate	(2) l/h	721	604	432	791	662	475	1189	860	738	
Pressure drops	(2) kPa	19	14	8	38	28	15	22	12	9	
Water content	l										
Fans											
Fan	type/n°	centrifugal/2						centrifugal/3			
Air flow rate	m³/h	720	600	400	720	600	400	1140	930	700	
Sound data											
Sound power level	(3) dB(A)	56	51	42	56	51	42	62	57	51	
Sound pressure level	dB(A)	48	43	34	48	43	34	54	49	43	
Diameter connections											
Standard coil	Ø	3/4"			3/4"			3/4"			
Additional coil	Ø	1/2"			1/2"			1/2"			
Electrical Features											
Absorbed power	W	37	20	8	37	20	8	80	40	30	
Max. input current	A	0,35			0,35			0,49			
Electrical wiring		90	86	60	90	86	60	90	84	45	
Power supply	V/ph/Hz	230V~50Hz									
Energy Efficiency classification (EUROVENT)											
FCEER		D			D			D			
FCCOP	(4)	D			D			D			

H max. speed; M med. speed; L min. speed

(1) Room air 20°C b.s.; Water (in/out) 70°C/60°C (EUROVENT)

(2) Room air 27°C b.s./19°C b.u.; Water (in/out) 7°C/12°C (EUROVENT)

(3) Sound power level on the basis of measurements made in compliance with Eurovent 8/2

(4) FCCOP Related to: Room air 20°C b.s.; Water (in) 50°C; Water flow rate as in cooling mode

Sound pressure level (A-weighted) measured in the room with volume V=85m³, reverberation time t = 0.5 s; Direction factor Q = 2; Distance r = 2.5m

Technical data (EUROVENT FCPH)

FCXI - P	20			24			30			34			36			40			44				
	H	M	L	H	M	L	H	M	L	H	M	L	H	M	L	H	M	L	H	M	L		
Fan speed																							
Heating Performance																							
2 pipe configuration																							
Heating capacity (70°C)	(1)	kW	2,77	2,67	1,75	3,61	3,43	1,97	4,73	4,42	3,15	5,60	5,26	3,44	4,73	4,42	3,15	6,85	6,50	4,76	7,61	7,06	4,78
Water flow rate	(1)	l/h	243	234	154	317	301	173	415	388	277	491	462	302	415	388	277	601	570	418	668	619	419
Pressure drops	(1)	kPa	5	5	2	4	3	1	14	12	7	8	7	3	14	12	7	13	12	7	18	15	8
Heating capacity (50°C)	(2)	kW	1,64	1,60	1,00	2,14	2,03	1,17	2,70	2,56	1,81	3,33	3,13	2,04	2,80	2,62	1,86	4,05	3,85	2,80	4,55	4,22	2,96
Water flow rate	(2)	l/h	232	220	131	267	253	162	365	342	222	459	429	266	364	343	221	519	485	330	678	629	424
Pressure drops	(2)	kPa	5	5	2	3	2	1	6	6	5	7	6	3	11	10	4	10	9	4	18	16	8
Heating capacity (45°C)	(3)	kW	1,38	1,33	0,87	1,80	1,70	0,98	2,35	2,20	1,57	2,79	2,62	1,71	2,35	2,20	1,57	3,41	3,23	2,37	3,79	3,51	2,38
Water flow rate	(3)	l/h	239	230	151	312	296	170	408	382	272	483	454	297	408	382	272	591	561	411	657	609	412
Pressure drops	(3)	kPa	5	5	2	4	3	1	14	12	7	8	7	3	14	12	7	13	12	7	17	15	8
Cooling Performance																							
Total cooling capacity	(4)	kW	1,35	1,28	0,76	1,55	1,46	0,94	2,12	1,99	1,29	2,67	2,49	1,54	2,11	1,99	1,28	3,02	2,82	1,92	3,94	3,65	2,46
Sensible cooling capacity	(4)	kW	1,13	1,07	0,59	1,24	1,17	0,69	1,64	1,54	0,98	2,03	1,89	1,04	1,66	1,55	0,96	2,31	2,15	1,45	2,90	2,69	1,79
Water flow rate	(4)	l/h	232	220	131	267	253	162	365	342	222	459	429	266	364	343	221	519	485	330	678	629	424
Pressure drops	(4)	kPa	5	4	2	3	2	1	26	23	11	13	11	5	26	24	11	12	10	5	32	28	14
Fans																							
Fans	type/n°	centrifugal/1									centrifugal/2												
Air flow rate	m³/h	257	240	123	257	240	123	424	390	225	424	390	225	424	390	225	515	470	300	515	470	300	
High static pressure	Pa	57	50	14	57	50	14	59	50	16	59	50	16	59	50	16	60	50	20	60	50	20	
Sound data																							
Sound power level (inle+radiator)	(5)	dB(A)	58	57	37	58	57	37	52	50	36	52	50	36	52	50	36	55	53	43	55	53	43
Sound power level (outlet)		dB(A)	54	53	33	54	53	33	48	46	32	48	46	32	48	46	32	51	49	39	51	49	39
Diameter connections																							
Standard coil	∅	1/2"			/			1/2"			/			3/4"			3/4"			/			
Increased coil	∅	/			3/4"			/			3/4"			/			/			3/4"			
Electrical Features																							
Absorbed power	W	30	25	8	30	25	8	40	31	10	40	31	10	40	31	10	48	38	16	48	38	16	
Max. input current	A																						
Electrical wiring	%	90	84	44	90	84	44	90	84	48	90	84	48	90	84	48	90	82	52	90	82	52	
Power supply	V/ph/Hz	230V~50Hz																					
Energy Efficiency classification (EUROVENT)																							
FCEER		E			E			E			E			E			E			D			
FCCOP	(6)	D			D			D			D			D			D			D			

FCXI - P	50			54			56			80			84				
	H	M	L	H	M	L	H	M	L	H	M	L	H	M	L		
Fan speed																	
Heating Performance																	
2 pipe configuration																	
Heating capacity (70°C)	(1)	kW	7,82	7,53	5,53	9,11	8,76	6,38	7,82	7,53	5,53	11,96	11,14	6,52	12,62	11,64	6,62
Water flow rate	(1)	l/h	686	661	485	799	768	559	686	661	485	1049	978	572	1107	1021	581
Pressure drops	(1)	kPa	12	12	7	19	18	10	12	12	7	14	12	5	18	16	6
Heating capacity (50°C)	(2)	kW	4,65	4,48	3,35	5,43	5,22	3,80	4,66	4,49	3,30	7,00	6,50	3,80	7,54	6,95	3,97
Water flow rate	(2)	l/h	654	631	464	772	743	544	657	635	465	901	836	487	1110	1029	611
Pressure drops	(2)	kPa	12	10	10	18	17	10	12	11	6	11	9	4	18	16	6
Heating capacity (45°C)	(3)	kW	3,89	3,75	2,75	4,53	4,36	3,17	3,89	3,75	2,75	5,95	5,54	3,24	6,28	5,79	3,29
Water flow rate	(3)	l/h	675	650	478	786	756	550	675	650	478	1032	962	563	1090	1004	571
Pressure drops	(3)	kPa	12	12	7	18	18	10	12	12	7	14	12	5	17	16	6
Cooling Performance																	
Total cooling capacity	(4)	kW	3,80	3,67	2,70	4,48	4,32	3,16	3,82	3,69	2,70	5,24	4,86	2,83	6,45	5,98	3,55
Sensible cooling capacity	(4)	kW	2,88	2,77	2,03	3,18	3,06	2,21	2,87	2,75	2,06	3,93	3,64	2,09	4,27	3,94	2,31
Water flow rate	(4)	l/h	654	631	464	772	743	544	657	635	465	901	836	487	1110	1029	611
Pressure drops	(4)	kPa	16	15	9	22	20	12	16	15	9	13	12	4	18	15	6
Fans																	
Fans	type/n°	centrifugal/2									centrifugal/3						
Air flow rate	m³/h	630	600	410	630	600	410	630	600	410	799	730	405	799	730	405	
High static pressure	Pa	55	50	23	55	50	23	55	50	23	60	50	15	60	50	15	
Sound data																	
Sound power level (inle+radiator)	(5)	dB(A)	57	55	45	57	55	45	57	55	45	58	55	38	58	55	38
Sound power level (outlet)		dB(A)	53	51	41	53	51	41	53	51	41	54	51	34	54	51	34
Diameter connections																	
Standard coil	∅	3/4"			/			3/4"			3/4"			/			
Increased coil	∅	/			3/4"			/			/			3/4"			
Electrical Features																	
Absorbed power	W	60	50	18	60	50	18	60	50	18	78	61	23	78	61	23	
Max. input current	A																
Electrical wiring	%	90	86	60	90	86	60	90	86	60	90	84	45	90	84	45	
Power supply	V/ph/Hz	230V~50Hz															
Energy Efficiency classification (EUROVENT)																	
FCEER		D			D			D			D			D			
FCCOP	(6)	D			D			D			D			D			

H max. speed; M med. speed; L min. speed

(1) Room air 20°C b.s.; Water (in/out) 70°C/60°C;

(2) Room air 20°C b.s.; Water (in) 50°C; Water flow rate as in cooling mode (EUROVENT)

(3) Room air 20°C b.s.; Water (in/out) 45°C/40°C (EUROVENT)

(4) Room air 27°C b.s./19°C b.u.; Water (in/out) 7°C/12°C (EUROVENT)

(5) Sound power level on the basis of measurements made in compliance with Eurovent 8/2

(6) FCCOP Related to: Room air 20°C b.s.; Water (in) 50°C; Water flow rate as in cooling mode

Sound pressure level (A-weighted) measured in the room with volume V=85m³, reverberation time t = 0.5 s; Direction factor Q = 2; Distance r = 2.5m

Technical data (EUROVENT FCPH)

FCXI - P	20			30			36			40				
	H	M	L	H	M	L	H	M	L	H	M	L		
Fan speed														
Heating Performance														
4 pipe configuration with additional heat exchanger														
Heating capacity (70°C)	(1)	kW	1,67	1,62	1,12	2,75	2,64	1,94	2,75	2,64	1,94	3,21	3,07	2,43
Water flow rate	(1)	l/h	144	139	96	237	227	167	241	232	170	276	264	209
Pressure drops	(1)	kPa	6	6	3	26	24	8	26	24	14	18	17	11
Cooling Performance														
Total cooling capacity	(2)	kW	1,35	1,28	0,76	2,12	1,99	1,29	2,11	1,99	1,28	3,02	2,82	1,92
Sensible cooling capacity	(2)	kW	1,13	1,07	0,59	1,64	1,54	0,98	1,66	1,55	0,96	2,31	2,15	1,45
Water flow rate	(2)	l/h	232	220	131	365	342	222	364	343	221	519	485	330
Pressure drops	(2)	kPa	5	4	2	26	23	11	26	24	11	12	10	5
Fans														
Fans	type/n°		centrifugal/1			centrifugal/2								
Air flow rate	m³/h		257	240	123	424	390	225	424	390	225	515	470	300
High static pressure	Pa		57	50	14	59	50	16	59	50	16	60	50	20
Sound data														
Sound power level (inle+radiator)	(3)	dB(A)	58	57	37	52	50	36	52	50	36	55	53	43
Sound power level (outlet)		dB(A)	54	53	33	48	46	32	48	46	32	51	49	39
Diameter connections														
Standard coil	Ø		1/2"			1/2"			3/4"			3/4"		
Additional coil	Ø		1/2"			1/2"			1/2"			1/2"		
Electrical Features														
Absorbed power	W		30	25	8	40	31	10	40	31	10	48	38	16
Max. input current	A													
Electrical wiring	%		90	84	44	90	84	48	90	84	48	90	82	52
Power supply	V/ph/Hz													
Energy Efficiency classification (EUROVENT)														
FCEER			E			E			E			E		
FCCOP	(4)		D			D			D			D		

FCXI - P	50			56			80				
	H	M	L	H	M	L	H	M	L		
Fan speed											
Heating Performance											
4 pipe configuration with additional heat exchanger											
Heating capacity (70°C)	(1)	kW	4,04	3,91	3,21	4,04	3,91	3,21	6,45	6,39	5,78
Water flow rate	(1)	l/h	354	343	282	354	343	282	566	561	507
Pressure drops	(1)	kPa	31	29	20	31	29	20	15	15	12
Cooling Performance											
Total cooling capacity	(2)	kW	3,80	3,67	2,70	3,82	3,69	2,70	5,24	4,86	2,83
Sensible cooling capacity	(2)	kW	2,88	2,77	2,03	2,87	2,75	2,06	3,93	3,64	2,09
Water flow rate	(2)	l/h	654	631	464	657	635	465	901	836	487
Pressure drops	(2)	kPa	16	15	9	16	15	9	13	12	4
Fans											
Fans	type/n°		centrifugal/2			centrifugal/3					
Air flow rate	m³/h		630	600	410	630	600	410	799	730	405
High static pressure	Pa		55	50	23	55	50	23	60	50	15
Sound data											
Sound power level (inle+radiator)	(3)	dB(A)	57	55	45	57	55	45	58	55	38
Sound power level (outlet)		dB(A)	53	51	41	53	51	41	54	51	34
Diameter connections											
Standard coil	Ø		3/4"			3/4"			3/4"		
Additional coil	Ø		1/2"			1/2"			1/2"		
Electrical Features											
Absorbed power	W		60	50	18	60	50	18	78	61	23
Max. input current	A										
Electrical wiring	%		90	86	60	90	86	60	90	84	45
Power supply	V/ph/Hz										
Energy Efficiency classification (EUROVENT)											
FCEER			D			D			D		
FCCOP	(4)		D			D			D		

H max. speed; M med. speed; L min. speed

(1) Room air 20°C b.s.; Water (in/out) 70°C/60°C (EUROVENT)

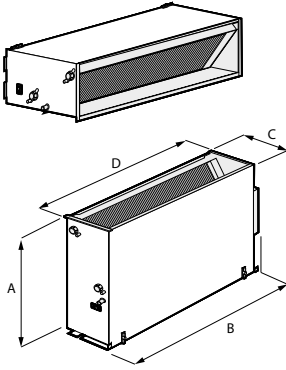
(2) Room air 27°C b.s./19°C b.u.; Water (in/out) 7°C/12°C (EUROVENT)

(3) Sound power level on the basis of measurements made in compliance with Eurovent 8/2

(4) FCCOP Related to: Room air 20°C b.s.; Water (in) 50°C; Water flow rate as in cooling mode

Sound pressure level (A-weighted) measured in the room with volume V=85m³, reverberation time t = 0.5 s; Direction factor Q = 2; Distance r = 2.5m

Dimensions (mm)

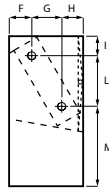
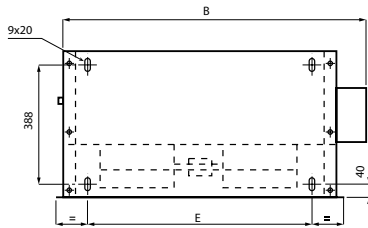


FCXI_P (Coil - Standard/Increased)

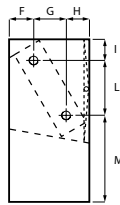
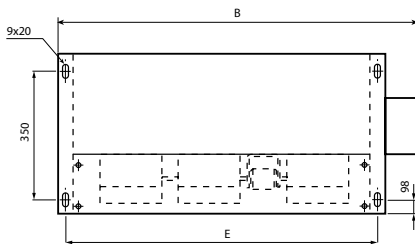
Mod FCXI_P		20 /24	30/34/36	40/44	50/54/56	80/84
Height	A	453	453	453	453	558
Width	B*	562	793	1013	1013	1147
	D	522	753	973	973	1122
Depth	C	216	216	216	216	216
Weight	kg	13	18	22	22	33

* Max dimensions

FCXI_P 20-30-36-40-50-56
FCXI_P 24-34-44-54



FCXI_P 80
FCXI_P 84



	20/24	30/34/36	40/44	50/54/56	62/64	80/84
E	440	671	891	891	1102	1102
F	41	41	41	41	41	41
G	101	101	101	101	107	107
H	74	74	74	74	68	68
I	49	49	49	49	32	32
L	144	144	144	144	253	253
M	260	260	260	260	273	273